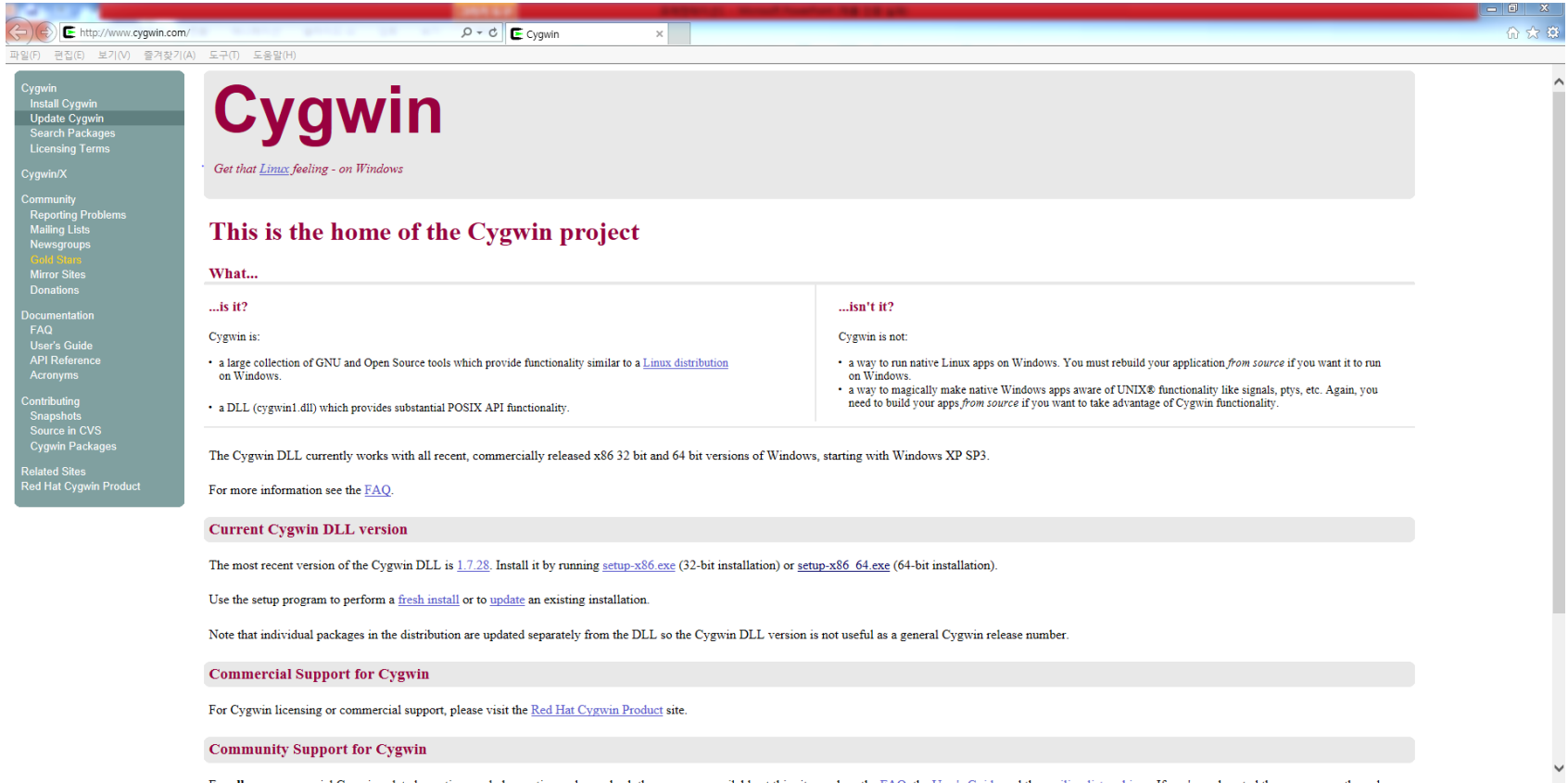


Cygwin

Cygwin?

- A virtual linux terminal
- It support basic linux commands and GNU tools(gcc, make, etc.)

installation



The screenshot shows a web browser window displaying the homepage of the Cygwin project. The browser's address bar shows the URL <http://www.cygwin.com/>. The page features a navigation menu on the left with categories like 'Cygwin', 'Cygwin/X', 'Community', 'Documentation', 'Contributing', and 'Related Sites'. The main content area has a large 'Cygwin' title and a subtitle 'Get that [Linux](#) feeling - on Windows'. Below this is a heading 'This is the home of the Cygwin project' and a 'What...' section. This section is divided into two columns: '...is it?' and '...isn't it?'. The '...is it?' column lists that Cygwin is a large collection of GNU and Open Source tools and a DLL (cygwin1.dll) providing substantial POSIX API functionality. The '...isn't it?' column states that Cygwin is not a way to run native Linux apps on Windows and is not a way to magically make native Windows apps aware of UNIX functionality. Below this, there are sections for 'Current Cygwin DLL version' (1.7.28), 'Commercial Support for Cygwin' (pointing to the Red Hat Cygwin Product site), and 'Community Support for Cygwin' (pointing to FAQs, User's Guide, and mailing list archives).

Cygwin
Install Cygwin
Update Cygwin
Search Packages
Licensing Terms

Cygwin/X

Community
Reporting Problems
Mailing Lists
Newsgroups
Gold Stars
Mirror Sites
Donations

Documentation
FAQ
User's Guide
API Reference
Acronyms

Contributing
Snapshots
Source in CVS
Cygwin Packages

Related Sites
Red Hat Cygwin Product

Cygwin

Get that [Linux](#) feeling - on Windows

This is the home of the Cygwin project

What...

...is it? <p>Cygwin is:</p> <ul style="list-style-type: none">• a large collection of GNU and Open Source tools which provide functionality similar to a Linux distribution on Windows.• a DLL (cygwin1.dll) which provides substantial POSIX API functionality.	...isn't it? <p>Cygwin is not:</p> <ul style="list-style-type: none">• a way to run native Linux apps on Windows. You must rebuild your application <i>from source</i> if you want it to run on Windows.• a way to magically make native Windows apps aware of UNIX® functionality like signals, ptys, etc. Again, you need to build your apps <i>from source</i> if you want to take advantage of Cygwin functionality.
----------------------------------------------------------------------------------------------------------------------------------------------------------------------------------------------------------------------------------------------------------------------------------------------------------------	--------------------------------------------------------------------------------------------------------------------------------------------------------------------------------------------------------------------------------------------------------------------------------------------------------------------------------------------------------------------------------------------------------------------------------------------------------

The Cygwin DLL currently works with all recent, commercially released x86 32 bit and 64 bit versions of Windows, starting with Windows XP SP3.

For more information see the [FAQ](#).

Current Cygwin DLL version

The most recent version of the Cygwin DLL is [1.7.28](#). Install it by running [setup-x86.exe](#) (32-bit installation) or [setup-x86_64.exe](#) (64-bit installation).

Use the setup program to perform a [fresh install](#) or to [update](#) an existing installation.

Note that individual packages in the distribution are updated separately from the DLL so the Cygwin DLL version is not useful as a general Cygwin release number.

Commercial Support for Cygwin

For Cygwin licensing or commercial support, please visit the [Red Hat Cygwin Product](#) site.

Community Support for Cygwin

For all non-commercial Cygwin-related questions and observations, please check the resources available at this site, such as the [FAQ](#), the [User's Guide](#) and the [mailing list archives](#). If you've exhausted these resources then please

www.cygwin.com

installation

Current Cygwin DLL version

The most recent version of the Cygwin DLL is [1.7.28](#). Install it by running [setup-x86.exe](#) (32-bit installation) or [setup-x86_64.exe](#) (64-bit installation).

Use the setup program to perform a [fresh install](#) or to [update](#) an existing installation.

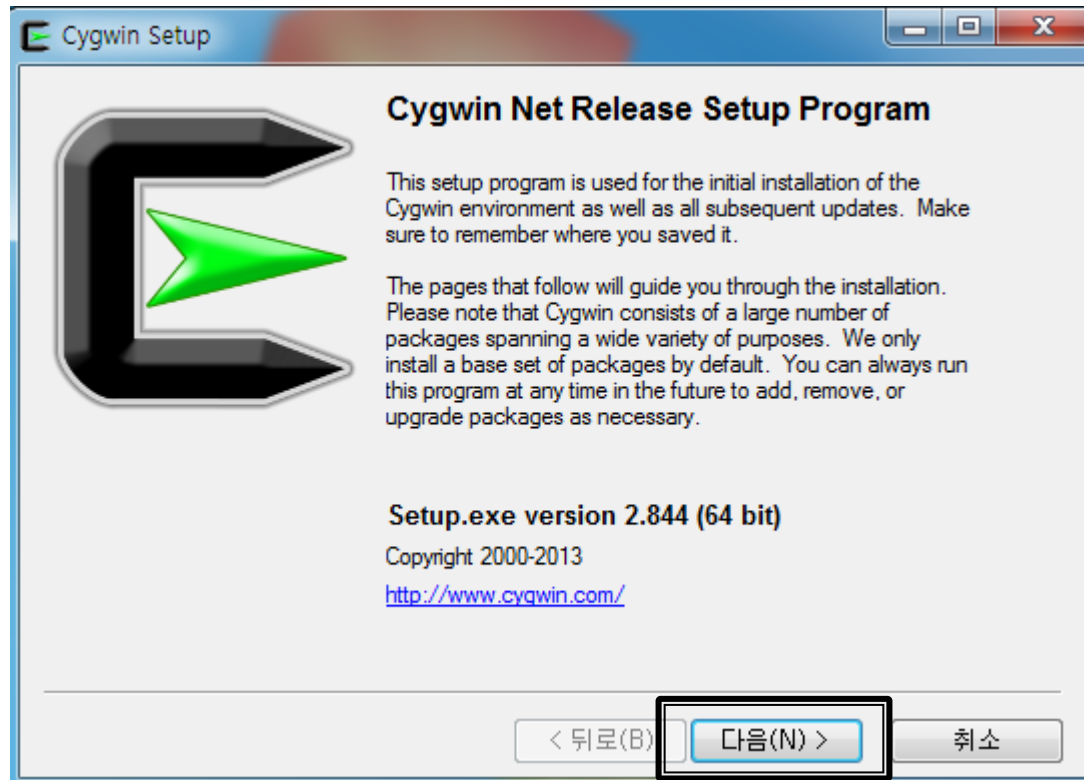
or

Note that individual packages in the distribution are updated separately from the DLL so the Cygwin DLL version is not useful as a general Cygwin release number.

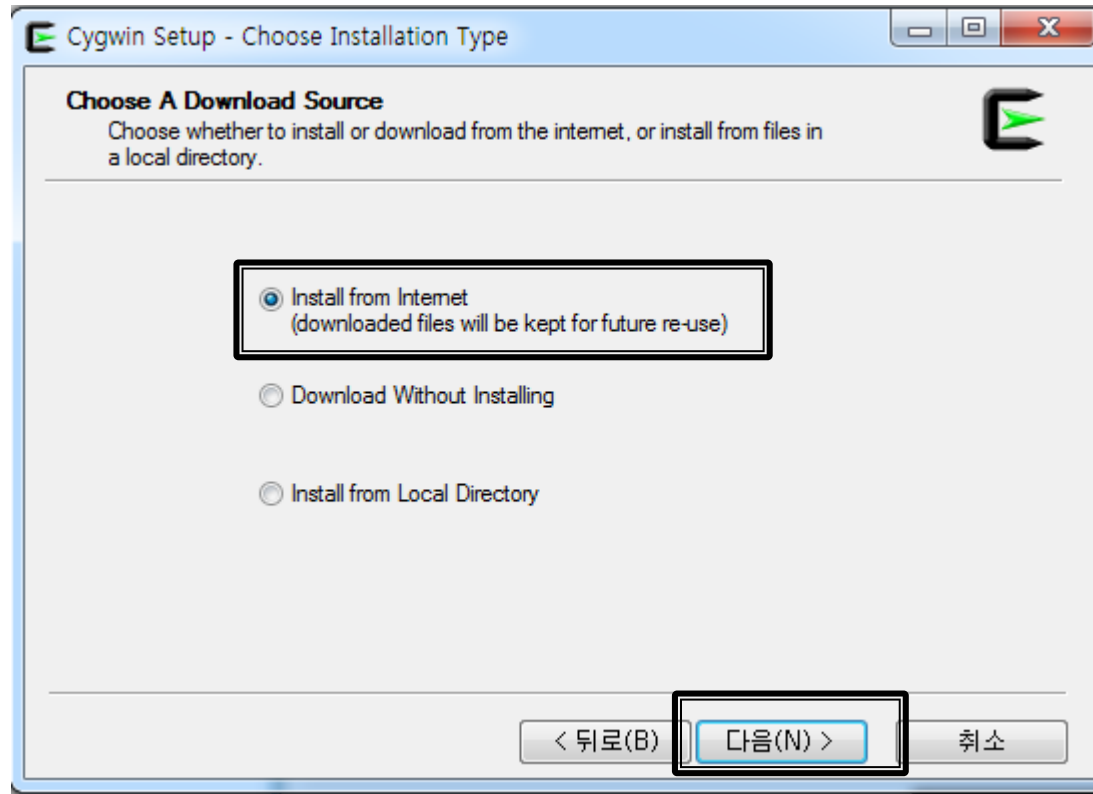
32bit - x86.exe

64bit- x86_64.exe

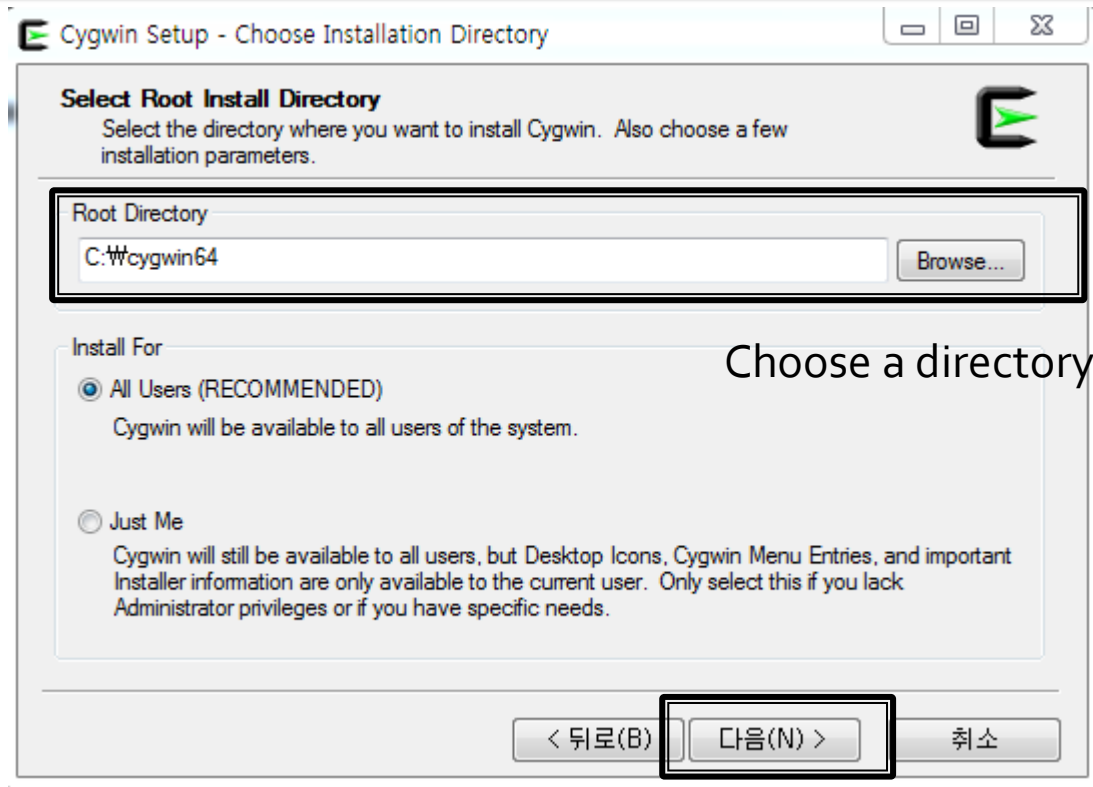
installation



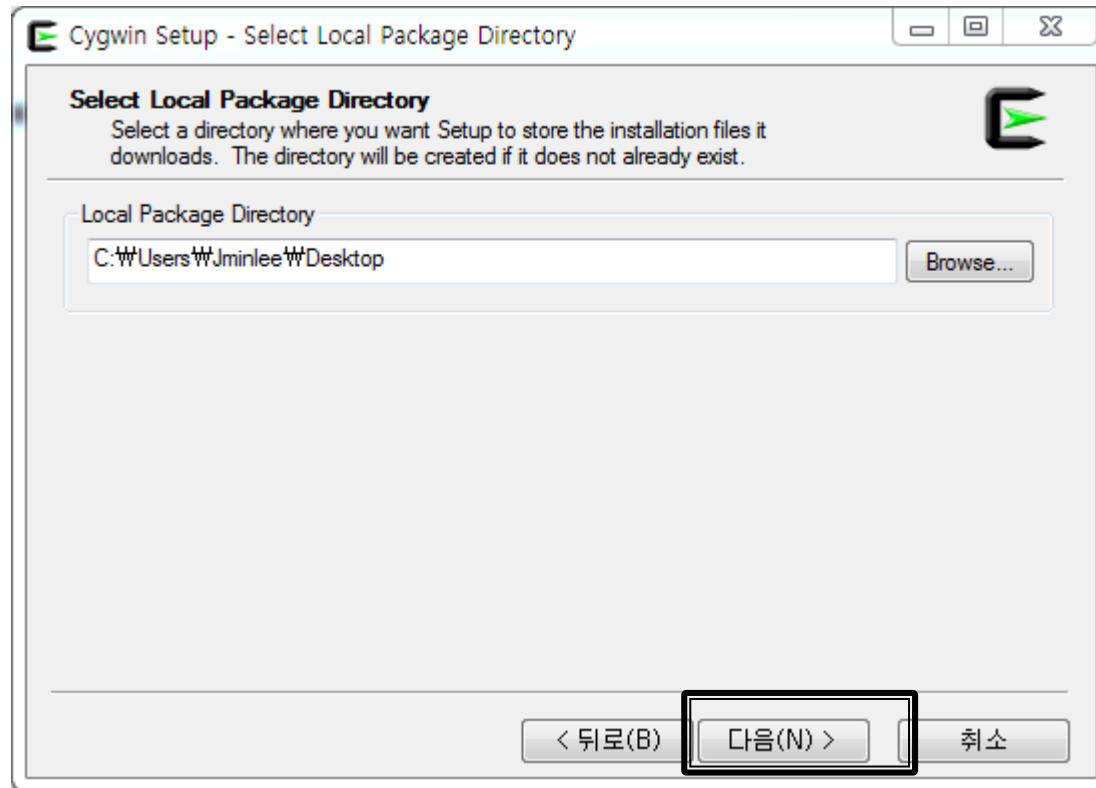
installation



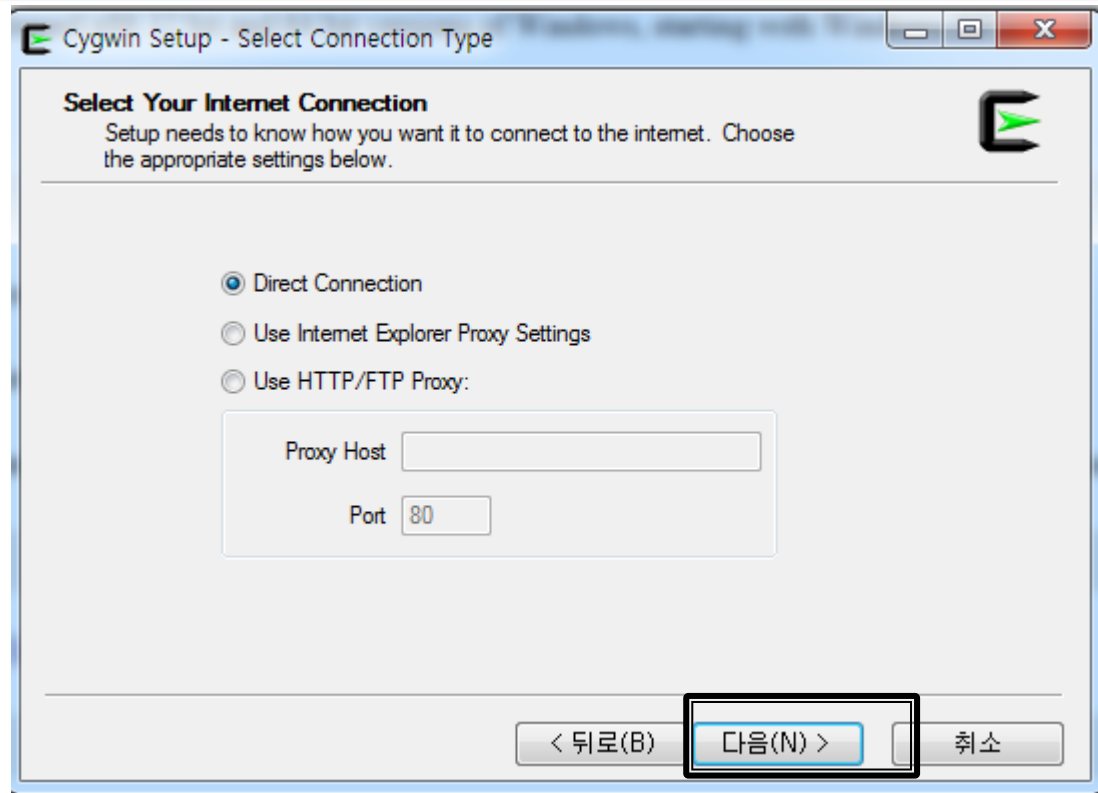
installation



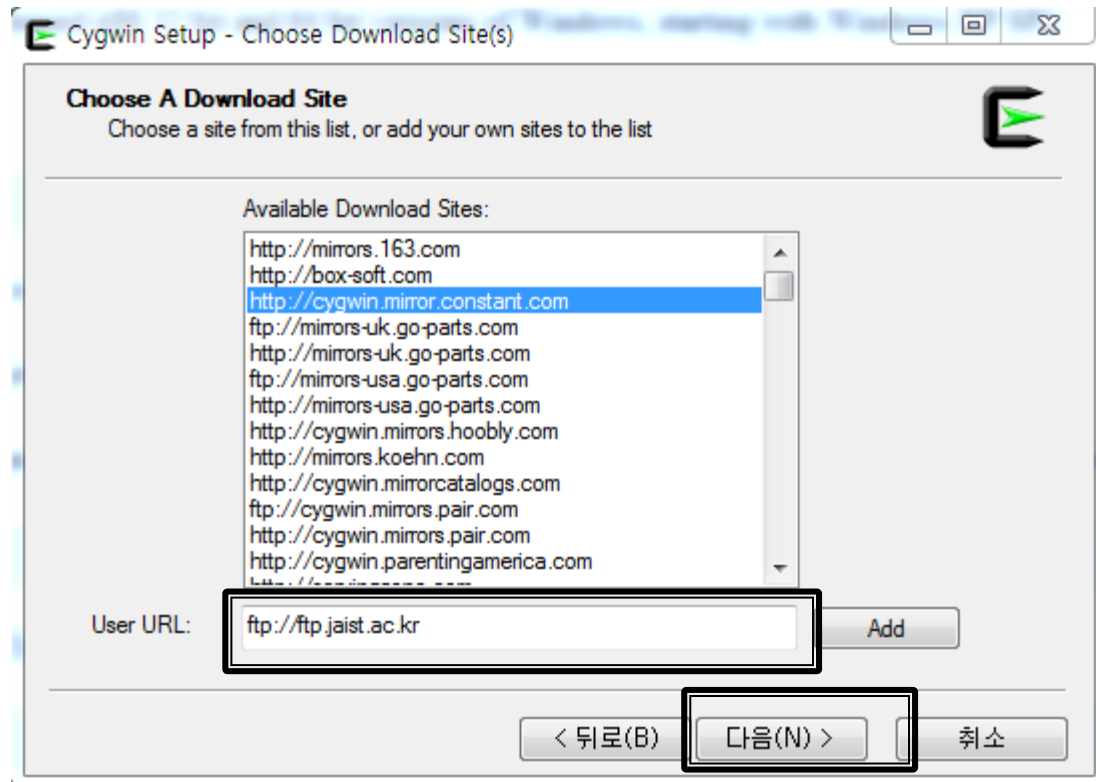
installation



installation

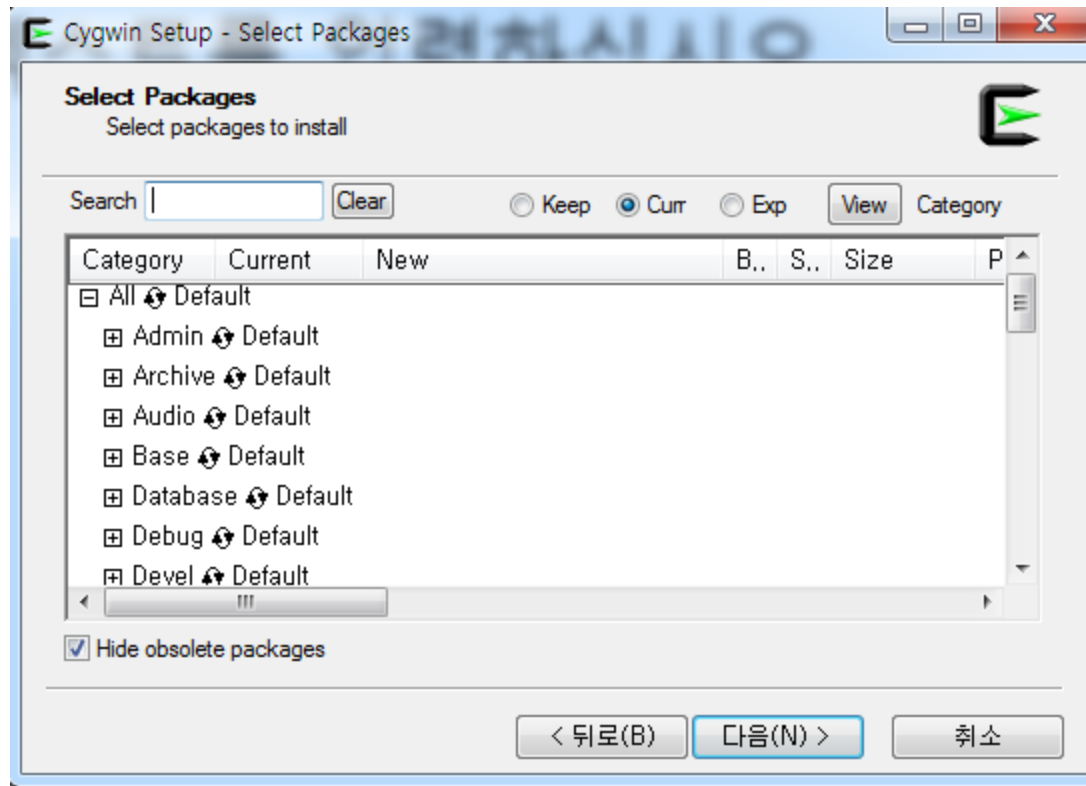


installation

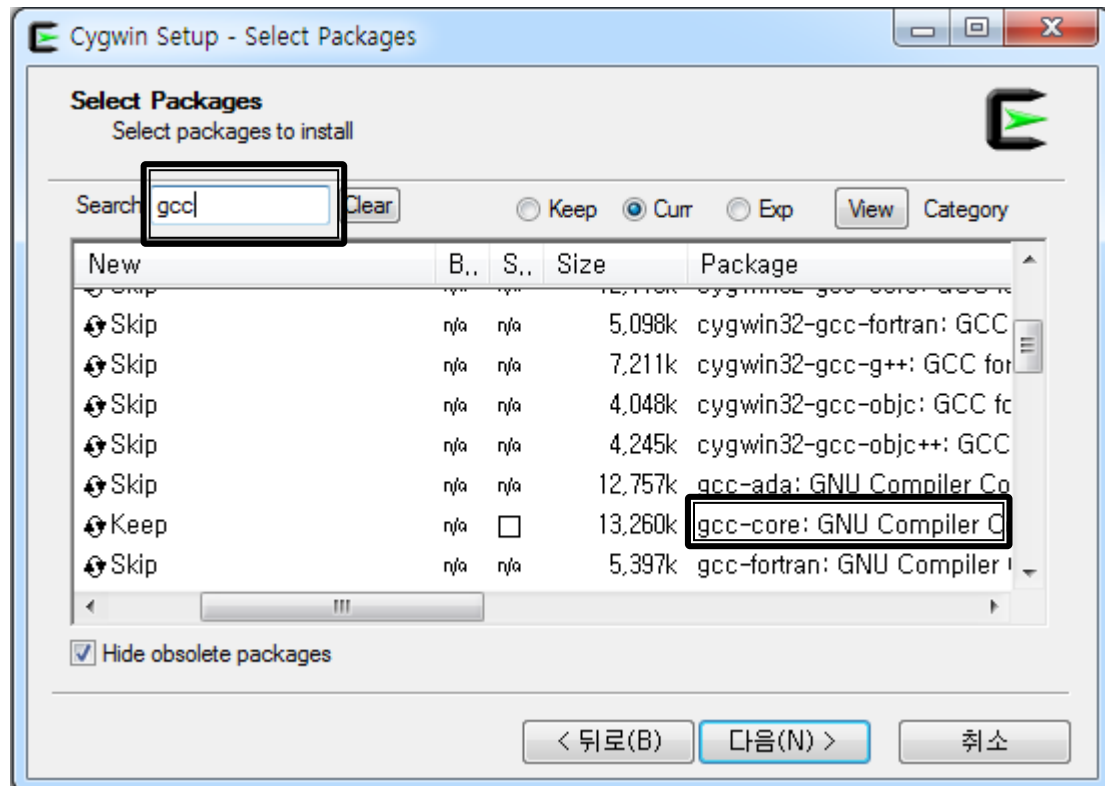


ftp://ftp.jaist.ac.kr

installation

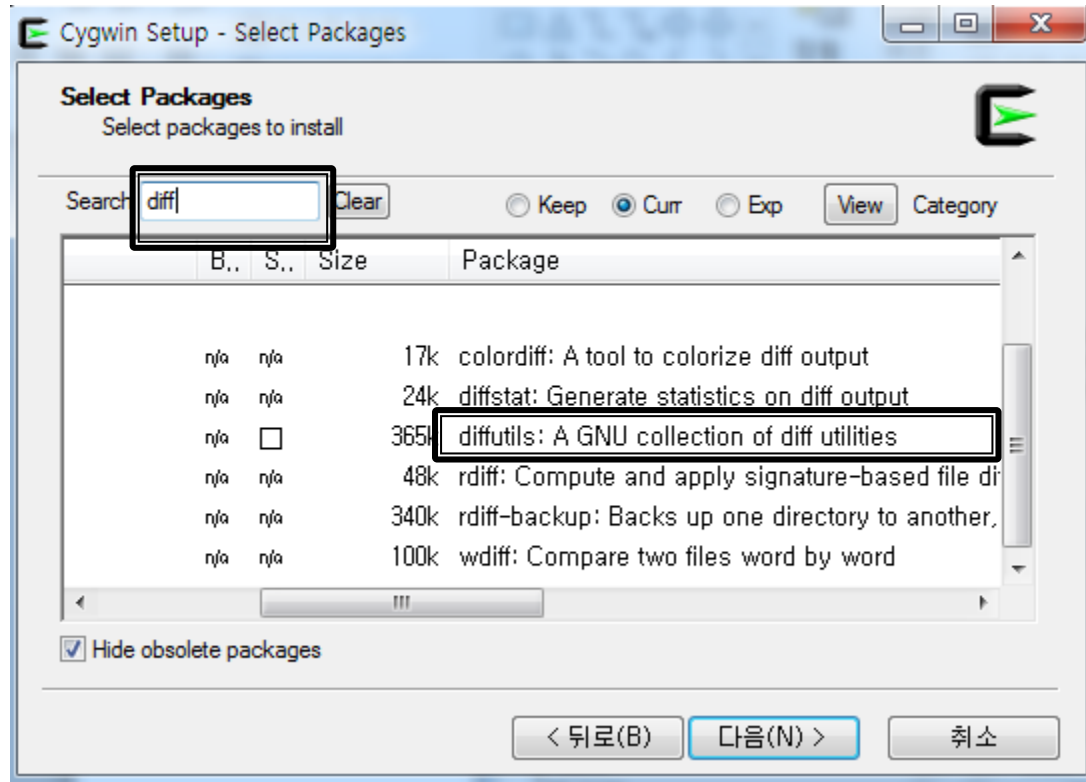


installation



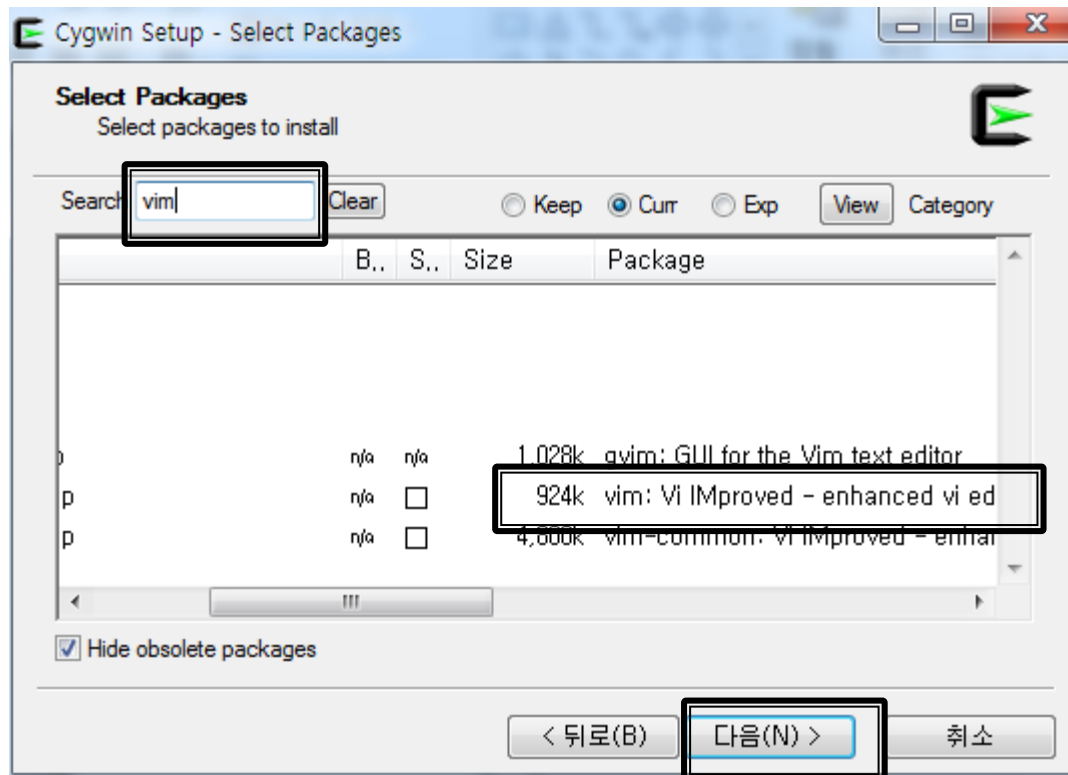
Search gcc -> Devel -> gcc-core

installation



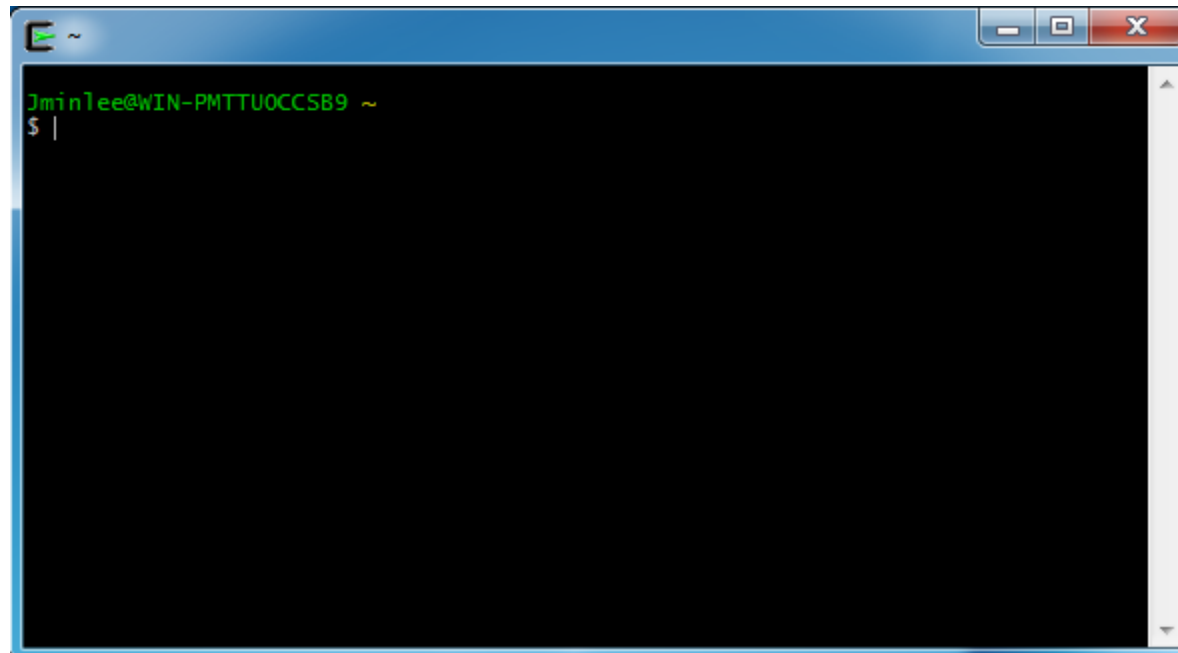
Search diff -> Utils -> diffutils

installation



Search vim -> Editors -> vim

Usage



A screenshot of a terminal window. The window title bar shows a green icon and a tilde (~). The terminal content displays the prompt `Jminlee@WIN-PMTTU0CCSB9 ~` followed by a shell prompt `$` and a vertical bar cursor `|`. The window has standard Windows-style minimize, maximize, and close buttons in the top right corner.

```
Jminlee@WIN-PMTTU0CCSB9 ~  
$ |
```

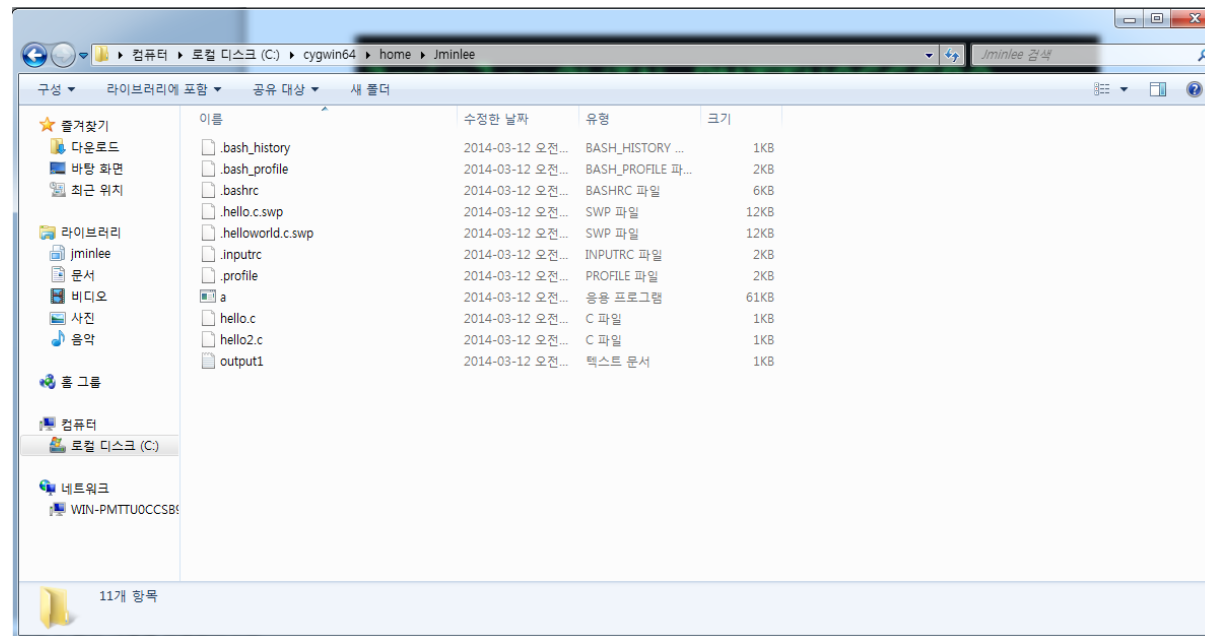
Usage

```
Jminlee@WIN-PMTTUOCCSB9 ~  
$ vim helloworld.c
```


Usage

```
Jminlee@WIN-PMTTU0CCSB9 ~  
$ vim helloworld.c
```

or



Cygwin home directory

Usage

```
Jminlee@WIN-PMTTUOCCSB9 ~  
$ gcc helloworld.c |
```

gcc [options] [source_file]

```
Jminlee@WIN-PMTTUOCCSB9 ~  
$ ls  
a.exe  helloworld.c
```

Usage

```
Jminlee@WIN-PMTTUOCCSB9 ~  
$ ./a.exe  
Hello, World!
```

./[executable file]